

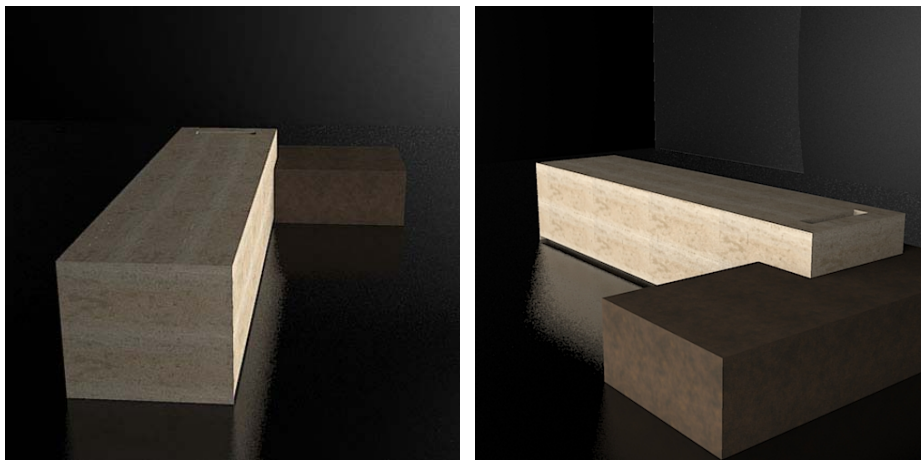
## Kitchens inspired by nature and art - The style and technology of TM Italia Cucine at Abitare il Tempo

**TM Italia** launched their latest Collections at this year's Verona trade fair 'Abitare il Tempo'.

At the fair, **TM Italia Cucine**, specialist manufacturers of high quality tailored kitchens, introduced 2 new contemporary designs: **PETRA** and **MONDRIAN**.

The new designs may be very different in style but they share the same level of refinement, innovation and quality. The creativity behind these models is typical of **TM Italia** who consistently combine technology and craftsmanship with the focus of meeting even the most discerning client's individual requirements.

### Tailored kitchens - personalised solutions for a unique environment



PETRA – 2008 design by TM Italia Cucine



***PETRA – The ultimate in kitchen design combining nature, minimalism and domotics***

Designed by Gianluca Tondi, Director of **TM Italia**, **PETRA** is a new addition to the **TM** kitchen range. The model presented at Abitare il Tempo combines an innovative mix of travertine stone and oxidized iron – some of Earth's most ancient natural materials. The kitchen has been developed with experts from various sectors to develop this minimalist sculptural kitchen which incorporates the latest in domotic technology.

Central to the model displayed at Abitare il Tempo is the work island, which is composed of two monolithic blocks of different height and length, clad in travertine and oxidized iron. Under a travertine top, a sliding motorized top reveals vertically raising appliances. By simply tapping the **TM\_touch'n'go** screen, exclusively programmed by **TM Italia** in collaboration with technology experts, the extractor hood, tap and oven are automatically raised and lowered and can even be rotated.

The **TM\_vision** video display can be raised and activated by simply tapping on the **TM\_touch'n'go** remote control. The video display features a personalized media centre giving the user access to television or the internet.

On the contrary to what meets the eye, the **PETRA** kitchen offers practical storage space with tall and low cabinets integrated in the design. The cabinets are all elegantly hidden behind sliding doors, finished in oxidized iron. By means of a motorized movement, the doors slide over each other, taking up no extra space when open.

Thanks to all these space-saving solutions (hidden electrical appliances, sliding tops and doors) and the latest in home automation technology, **PETRA** is as high-tech and useable as it is elegant. Its functionality and aesthetics, with an ability to transform from cooking to stand-by mode, not only follow the newest trends but also set a new benchmark for modern kitchen design.

**PETRA – domotic technology:**

**TM\_light:** a switch located at the kitchen entrance can be used to fully control the lights. Mode and dimmer functions enable user's to highlight different parts of **PETRA's** details and set the perfect room ambience.

**TM\_touch'n'go:** TM Italia's touch screen enables easy functionality of all of **PETRA's** moving parts including motorized appliances and moving worktop. User friendliness is paramount to the design: Press **TM\_in** to start using the kitchen and **TM\_out** to close down all functions and applications used. Other logical controls from **TM\_touch 'n' go** include **TM\_vision** and **TM\_oven**. Please see below for some of the key functions:

**TM\_in:** This function can be selected from the **TM\_touch'n'go** touch screen to turn on all lights to full intensity. **TM\_in** also opens the island worktop, revealing the sink and the cooktops whilst raising the tap and two motorised pop-up extractors.

**TM\_vision:** This is the touch screen function to expose a pop-up 26" LCD screen connected to a media centre with DVD player. Thanks to TVCC fibre optic wiring, **TM\_vision** allows you to watch analogue, digital or satellite television as well as enabling you to use the internet whilst in the kitchen. An integrated 250 GB hard disk allows you to save your favourite programs, films, music and other information. On request, **TM\_vision** can even be connected to your home's video-intercom.

**TM\_oven-up:** This is the touch screen function to raise the pop up oven. For ease of use and perfect positioning the oven can rotate almost 300°.

**TM\_out:** tapping **TM\_out** on the **TM\_touch'n'go** screen closes down all electrical appliances, the **TM\_vision** screen, retracts the worktop, extractor and the tap. Even the lighting can be programmed to enter a different mode when **TM\_out** is activated.

**PETRA – technical specifications****Dimensions of the model on display:**

- Island, T-shaped block, complete: H 542 cm x D 317 cm
- Island, taller block in travertine:
  - H close 93 cm, H with raised electrical appliances 150 cm
  - D close 106 cm, D with fully extended worktop 164 cm
- island, lower block in oxidised iron:
  - 317 cm L x 120 cm D, 59 cm H
- Tall cabinets: 362 cm L x 70 cm D; 224 cm H

**Finishes:**

- taller centre island: natural travertine cladding all around
- lower centre island: oxidized iron cladding all around
- wall cabinets: oxidized iron cladding
- inside surfaces of drawers and cabinets: finished in rosewood veneer throughout

**Automation:**

- drawers with motorized opening/closure
- sliding doors motorized opening/closure
- motorized vertical raising hood
- motorized vertical raising and rotating video screen
- motorized vertical raising and rotating oven
- motorized vertical raising water taps
- motorized sliding worktop: when closed the worktop hides the extractor hood, sink, tap and cooktop.

*TM Italia: tailor-made kitchen solutions for a personalised environment*

Established in 1998 to produce high end bespoke kitchens, **TM Italia Cucine** has now established a reputation which is second to none for design and quality of manufacturing. The company's kitchen systems offer the widest choice in customised kitchens. Clients can choose from **1750** lacquered colours, **426** laminates, **90** types of stone, **33** kinds of wood, **11** structures and **20** colours of glass, with further options for iron, steel, DuPont™ Corian®, aluminium, gold and silver leaf etc, to reflect each client's taste.

Materials, structures, finishes and details, colours and even the grain of the woods can be arranged to suit personal preference. **TM Italia** kitchen solutions offer an infinite range of choices, to 'dress' the kitchen for each person, matching his or her personality and DNA.

[www.tmitalia.com](http://www.tmitalia.com)



*TM Italia Cucine products are certified by a textile label, signed and personalised with the customer's name.*

*DuPont™ and Corian® are a trademark and a registered trademark of E. I. du Pont de Nemours and Company or its affiliates.*

**For further information on TM Italia, please contact the UK agent and supplier:**

**Simply Italian UK Ltd, 70 Flaxman Road, London SE5 9DH.**

**Tel 0207 095 8985. Fax 0207 095 8984**

**[www.simply-italian.co.uk](http://www.simply-italian.co.uk)**

**[sales@simply-italian.co.uk](mailto:sales@simply-italian.co.uk)**